

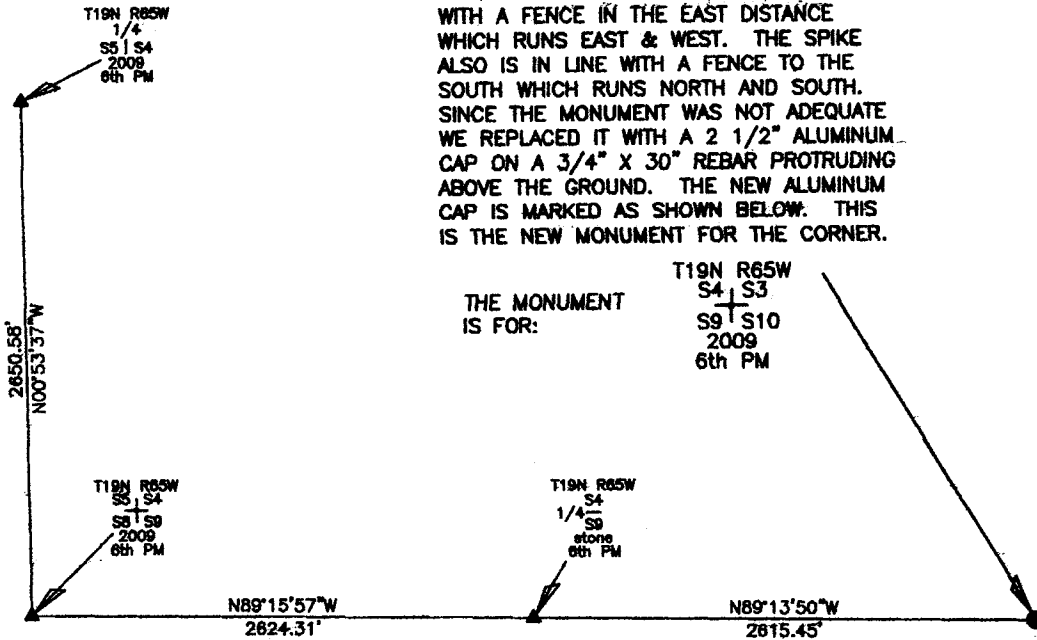
State of Wyoming Corner Record

(In compliance with the *CORNER PERPETUATION AND FILING ACT*, Wyoming Statutes, 1977, Section 36-11-101, et. seq., and the Rules and Regulations of the Board of Registration for Professional Engineers and Land Surveyors.)

Reverse side of this form may be used if more space is needed.

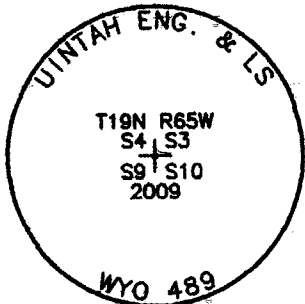
Record of original survey and citation of source of historic information (if corner is lost or obliterated). Description of corner monumentation evidence found and/or monument and accessories established to perpetuate the location of this corner. Sketch of relative location of monument, accessories, and reference points with course and distance to adjacent corner(s) (if determined in this survey). Method and rationale for reestablishment of lost or obliterated corner.

FOUND THE MONUMENT FOR THIS CORNER WHICH IS A SPIKE. THE SPIKE LINES UP WITH A FENCE IN THE EAST DISTANCE WHICH RUNS EAST & WEST. THE SPIKE ALSO IS IN LINE WITH A FENCE TO THE SOUTH WHICH RUNS NORTH AND SOUTH. SINCE THE MONUMENT WAS NOT ADEQUATE WE REPLACED IT WITH A 2 1/2" ALUMINUM CAP ON A 3/4" X 30" REBAR PROTRUDING ABOVE THE GROUND. THE NEW ALUMINUM CAP IS MARKED AS SHOWN BELOW. THIS IS THE NEW MONUMENT FOR THE CORNER.



THE MONUMENT IS FOR:

T19N R65W
S4 S3
S9 S10
2009
6th PM



THE MONUMENT IS MARKED

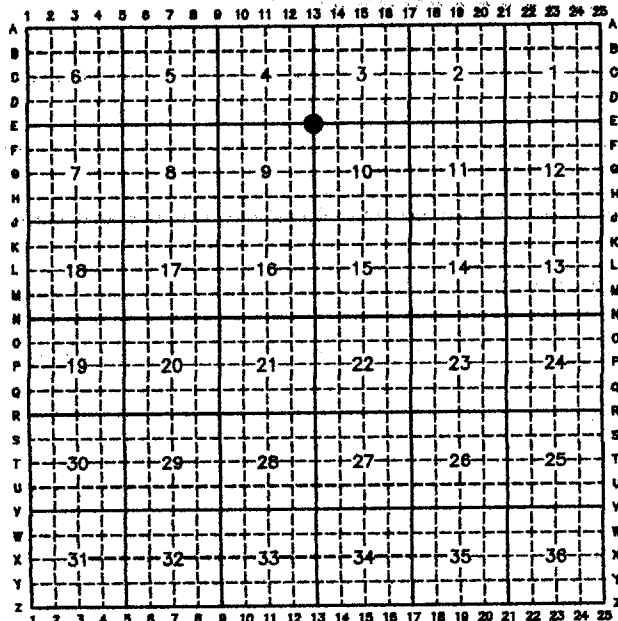
CORNER MONUMENT SYMBOLS

- RECORD IS FOR THIS CORNER MONUMENT.
- ▲ A RELATED CORNER OR WC MONUMENT.

SCALE 1"=1000'
(EXCEPT IN TRIVIAL CASES)
BEARINGS ARE RELATED TO WGS 84 WITH GPS OBSERVATIONS
DRAWN BY: NJM
P.C. J. FLOYD
COUNTY: LARAMIE

Date of Field Work: 04/19/2009 Office Reference: _____

CROSS INDEX DIAGRAM



Firm/Agency, Address

UELS, LLC

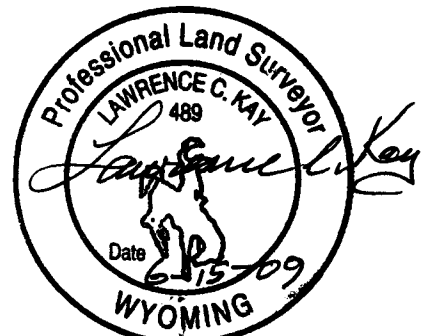
85 South 200 East

Vernal, Utah 84078

Telephone Number: 435-789-1017

This corner record was prepared by me or under my direction and supervision.

SEAL & SIGNATURE



RECORDED 6/22/2009 AT 12:06 PM REC# 525082 JK# 2118 PG# 880
DEBRA K. LATHROP, CLERK OF LARAMIE COUNTY, WY PAGE 1 OF 1

CORNER COMMON TO 4 SECTIONS

Corner Name: NORTHEAST CORNER OF SECTION 9 Section: 9 T 19N R 65W ; 6TH P.M. Cross Index No.: E-13
SBRPEPLS/PLSW: March 1994 (CLCR...SJA)